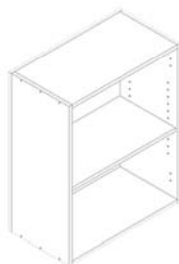


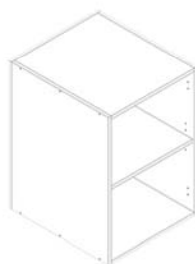
albedor

carcase RETAIL specifications

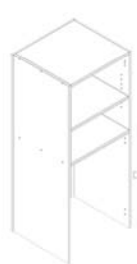
Effective 1st January 2022



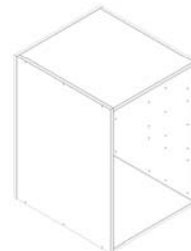
Overhead Cabinet



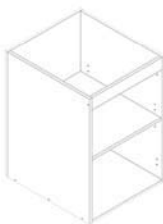
Base Cabinet



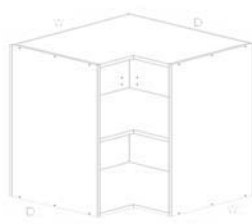
Appliance Cabinet



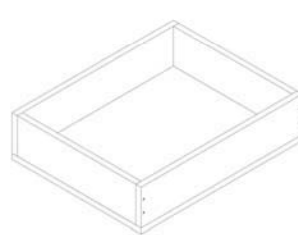
Drawer Cabinet



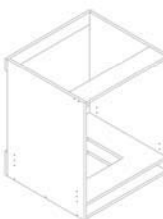
Base Cabinet Sink



Over Head Cabinet



Drawer Box



Under Bench Oven Cabinet



BASE CABINET – SOLID TOP

Carcase

(Manufactured to your specified size)

- Solid plant on back.
- Configured to accommodate left and/or right hand hinged door/s.

Shelves

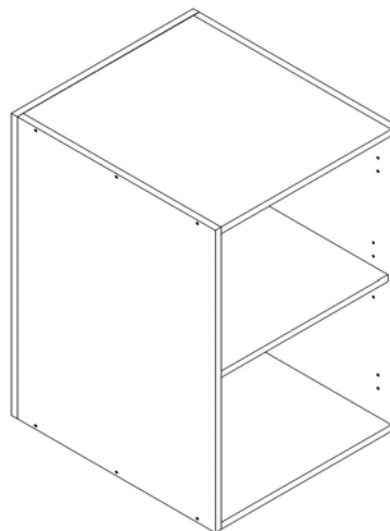
- Solid top shelf.
- 1 adjustable shelf set back 10mm with five (5) hole positions.

Hinge Block Holes

(Position variable if required)

- Std – 103mm to center of top block.
- Std – 100mm to center of bottom block.

Specs are standard only – Carcase sizes are parametric and can be changed in the height, width and depth



Pricing: Below pricing based on 720mm high cabinet. For other sizes, price on application.

Height	Width	Depth
720	250	560
720	300	560
720	350	560
720	400	560
720	450	560
720	500	560
720	550	560
720	600	560
720	650	560
720	700	560
720	750	560
720	800	560
720	850	560
720	900	560
720	950	560
720	1000	560
720	1050	560
720	1100	560
720	1150	560
720	1200	560

Ordering: For more information on how to order, please refer to the carcase order form.

Order Code	H	W	D
BC_Std_SolidTop			

ref d

BASE CABINET – HORIZONTAL RAIL

Carcase

(Manufactured to your specified size)

- Solid plant on back.
- Configured to accommodate left and/or right hand hinged door/s.
- 150mm deep horizontal front rail.

Shelves

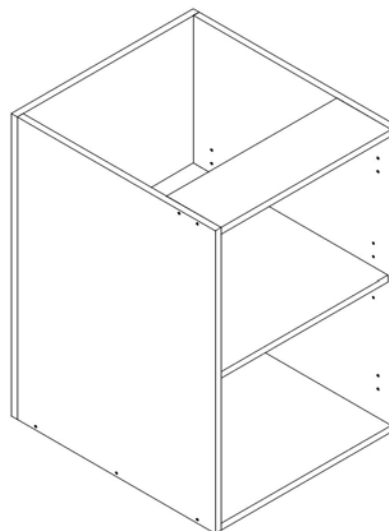
- 1 adjustable shelf set back 10mm with five (5) hole positions.

Hinge Block Holes

(Position variable if required)

- Std – 103mm to center of top block.
- Std – 100mm to center of bottom block

Specs are standard only – Carcase sizes are parametric and can be changed in the height, width and depth



Pricing: Below pricing based on 720mm high cabinet. For other sizes, price on application.

Height	Width	Depth
720	250	560
720	300	560
720	350	560
720	400	560
720	450	560
720	500	560
720	550	560
720	600	560
720	650	560
720	700	560
720	750	560
720	800	560
720	850	560
720	900	560
720	950	560
720	1000	560
720	1050	560
720	1100	560
720	1150	560
720	1200	560

Ordering: For more information on how to order, please refer to the carcass order form.

Order Code	H	W	D
BC_Std_TopRail			

ref b

BASE CABINET – VERTICAL RAIL

Carcase

(Manufactured to your specified size)

- Solid plant on back.
- Configured to accommodate left and/or right hand hinged door/s.
- 70mm vertical top rail.

Shelves

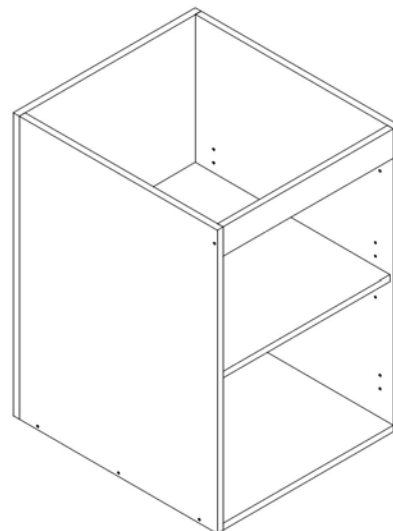
- 1 adjustable shelf set back 10mm with five (5) hole positions.

Hinge Block Holes

(Position variable if required)

- Std – 103mm to center of top block.
- Std – 100mm to center of bottom block.

Specs are standard only – Carcase sizes are parametric and can be changed in the height, width and depth



Pricing: Below pricing based on 720mm high cabinet. For other sizes, price on application.

Height	Width	Depth
720	250	560
720	300	560
720	350	560
720	400	560
720	450	560
720	500	560
720	550	560
720	600	560
720	650	560
720	700	560
720	750	560
720	800	560
720	850	560
720	900	560
720	950	560
720	1000	560
720	1050	560
720	1100	560
720	1150	560
720	1200	560

Ordering: For more information on how to order, please refer to the carcass order form.

Order Code	H	W	D
BC_Std_Sink			

ref c

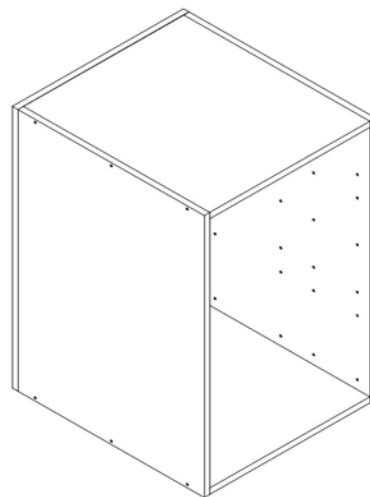
DRAWER CABINET – 1,2,3 OR 4 DRAWERS

Carcase

(Manufactured to your specified size)

- Carcase only (Drawer boxes ordered separately)
- Ends pricked to suit 1,2,3 or 4 drawer boxes. (For equally spaced drawer fronts).
- Solid plant on back.
- Bottom runner holes up 41mm from bottom of each drawer.
- Other runner holes up 25mm from bottom of each drawer.

Specs are standard only – Carcase sizes are parametric and can be changed in the height, width and depth



Pricing: Below pricing based on 720mm high cabinet. For other sizes, price on application.

Height	Width	Depth
720	400	560
720	450	560
720	500	560
720	600	560
720	700	560
720	800	560
720	900	560
720	1000	560

Ordering: For more information on how to order, please refer to the carcass order form.

Order Code	H	W	D
BC_Drawer_1234			

Ref I

CORNER CABINET – 90 DEGREE

Carcase

(Manufactured to your specified size)

- Configured to accommodate left and/or right hand hinged door/s.
- Allows 20mm cavity to both legs as std.
- Benchtop joining access holes in top shelf.

Shelves

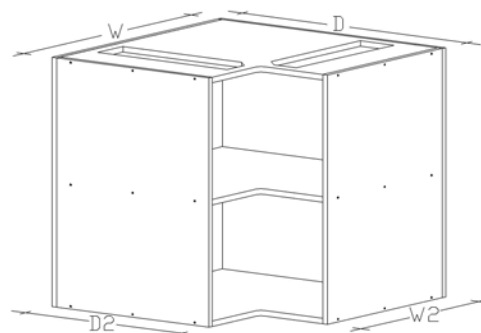
- 1 fixed center shelf set back 30mm.
- T-Mould edging to all shelves.

Hinge Block Holes

(Position variable if required)

- Std – 103mm to center of top block.
- Std – 100mm to center of bottom block.

Specs are standard only – Carcase sizes are parametric and can be changed in the height, width and depth



Pricing: Below pricing based on 720mm high cabinet. For other sizes, price on application.

Height	Width	Depth	W2	D2
720	780	780	540	540
720	880	880	540	540
720	1180	880	540	540
720	880	1180	540	540
720	1180	1180	540	540

Ordering: For more information on how to order, please refer to the carcass order form.

Order Code	H	W	D	W2	D2
BC_Corner_90					

ref g

DRAWER BOX –

16mm WHITE MELAMINE TO SUIT BC_DRAWER_1,2,3,4

Drawer Box

(Manufactured to your specified size)

- Solid plant on Bottom.

Drawer Box Height

- Standard 125mm high.

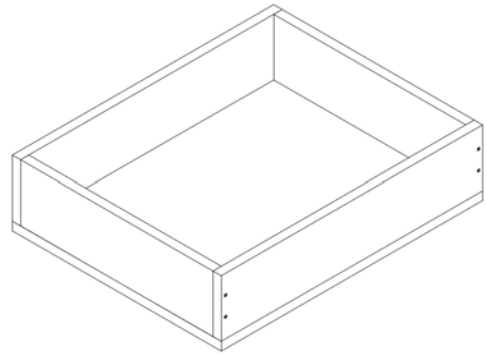
Drawer Box Width

Carcase overall width

Drawer Box Depth

- Drawer runner length.

Specs are standard only – Carcase sizes are parametric and can be changed in the height, width and depth



Pricing: Below pricing based on 125 mm high box. For other sizes, price on application.

Height	Width	Depth
125	400	500
125	450	500
125	500	500
125	600	500
125	700	500
125	800	500
125	900	500
125	1000	500

Ordering: For more information on how to order, please refer to the carcase order form.

Order Code	H	W (Carcase width)	D (Runner length)
Drw_Box_16Mel			

ref j

CORNER CABINET – VARIABLE ANGLE

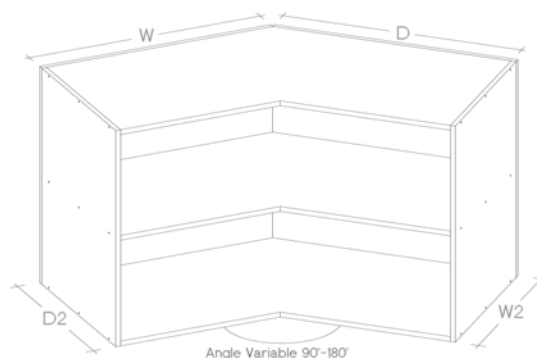
Carcase

(Manufactured to your specified size)

- Configured to accommodate left and/or right hand hinged door/s.
- Allows 20mm cavity to both legs as std.

Shelves

- 1 fixed center shelf set back 30mm.
- T-Mould edging to all shelves.



Hinge Block Holes

(Position variable if required)

Std – 103mm to center of top block.
Std – 100mm to center of bottom block.

Specs are standard only – Carcase sizes are parametric and can be changed in the height, width and depth

Pricing: Below pricing based on 720mm high cabinet. For other sizes, price on application.

Height	Width	Depth	W2	D2
720	780	780	540	540
720	880	880	540	540
720	1180	880	540	540
720	880	1180	540	540
720	1180	1180	540	540

Ordering: For more information on how to order, please refer to the carcass order form.

Order Code	H	W	D	W2	D2	Angle
BC_Corner_90-180						

ref h

UNDER BENCH OVEN CABINET

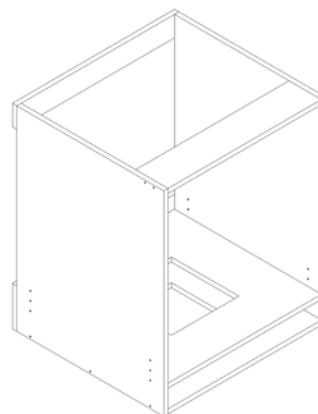
Carcase

(Manufactured to your specified size)

- Drawer runner holes pin pricked.

Shelves

- Moveable shelf to suit either a base drawer or fixed panel application.
- Moveable and fixed shelf cut out for ventilation.



Specs are standard only – Carcase sizes are parametric and can be changed in the height, width and depth

Pricing: Below pricing based on 720mm high cabinet. For other sizes, price on application.

Height	Width	Depth
720	600	560
720	900	560

Ordering: For more information on how to order, please refer to the carcass order form.

Order Code	H	W	D
BC_UBO			

ref k

BASE CABINET – WALL OVEN

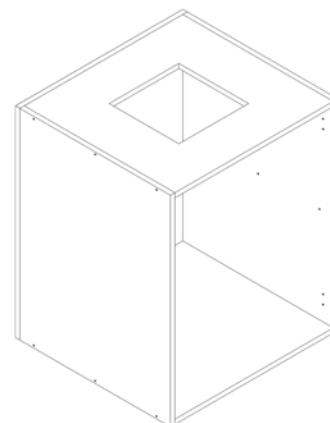
Carcase

(Manufactured to your specified size)

- Configured to accommodate drawers or Left and/or right hand hinged door/s.

Shelves

- Vented top shelf.



Specs are standard only – Carcase sizes are parametric and can be changed in the height, width and depth

Pricing: For other sizes, price on application.

Height	Width	Depth
290	600	560
580	600	560

Ordering: For more information on how to order, please refer to the carcase order form.

Order Code	H	W	D
BC_WallOven			

Ref L

BASE RETURN CABINET – RIGHT HAND

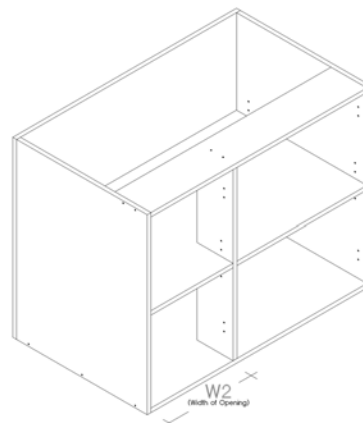
Carcase

(Manufactured to your specified size)

- Solid plant on back.
- W2=Width of Opening

Shelves

- 1 adjustable shelf set back 30mm.



Hinge Block Holes

(Position variable if required)

- Std – 103mm to center of top block.
- Std – 100mm to center of bottom block.

Specs are standard only – Carcase sizes are parametric and can be changed in the height, width and depth

Pricing: Below pricing based on 720mm high cabinet. For other sizes, price on application.

Height	Width	Depth	W2
720	900	560	426

Ordering: For more information on how to order, please refer to the carcase order form.

Order Code	H	W	D	W2
BC_Return_RH				

ref f

BASE RETURN CABINET – LEFT HAND

Carcase

(Manufactured to your specified size)

- Solid panel on back.
- W2= Width of Opening.

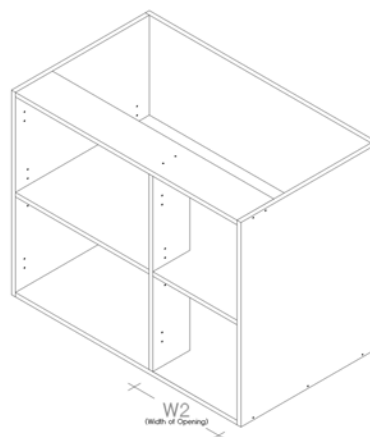
Shelves

- 1 adjustable shelf set back 30mm.

Hinge Block Holes

(Position variable if required)

- Std – 103mm to center of top block.
- Std – 100mm to center of bottom block.



Specs are standard only – Carcase sizes are parametric and can be changed in the height, width and depth

Pricing: Below pricing based on 720mm high cabinet. For other sizes, price on application.

Height	Width	Depth	W2
720	900	560	426

Ordering: For more information on how to order, please refer to the carcase order form.

Order Code	H	W	D	W2
BC_Return_LH				

ref e

OVERHEAD CABINET – 720mm HIGH

Carcase

(Manufactured to your specified size)

- Solid panel on back.
- Configured to accommodate left And/or right hand hinged door/s.

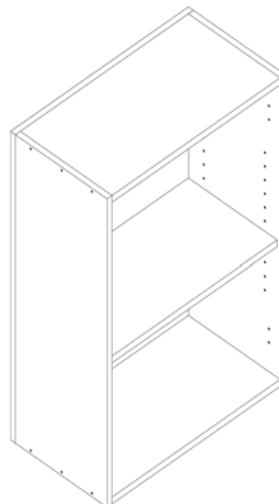
Shelves

- 720mm high carcass – 1 adjustable shelf set back 10mm.
- 760mm and above – 2 adjustable shelves set back 10mm.
- 380mm or less – no adjustable shelf.

Hinge Block Holes

(Position variable if required)

- Std – 100mm to center of blocks.



Specs are standard only – Carcase sizes are parametric and can be changed in the height, width and depth

Pricing: Below pricing based on 720mm high cabinet. For other sizes, price on application.

Height	Width	Depth
720	300	300
720	350	300
720	400	300
720	450	300
720	500	300
720	550	300
720	600	300
720	650	300
720	700	300
720	750	300
720	800	300
720	850	300
720	900	300
720	950	300
720	1000	300

Ordering: For more information on how to order, please refer to the carcass order form.

Order Code	H	W	D	W2
OH_Std				

ref m

OVERHEAD CABINET – 360mm HIGH

Carcase

(Manufactured to your specified size)

- Solid plant on back.
- Configured to accommodate left And/or right hand hinged door/s.

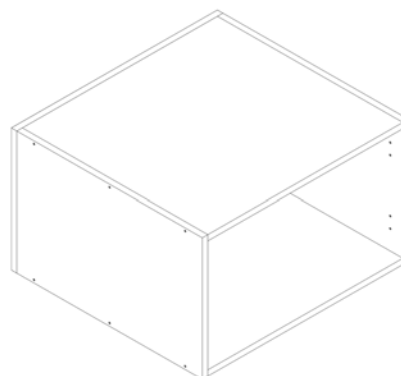
Shelves

- Carcase less than 380mm high have no adjustable shelf.

Hinge Block Holes

(Position variable if required)

- Std – 100mm to center of blocks.



Specs are standard only – Carcase sizes are parametric and can be changed in the height, width and depth

Pricing: Below pricing based on 360mm high cabinet. For other sizes, price on application.

Height	Width	Depth	
360	300	300	
360	350	300	
360	400	300	
360	450	300	
360	500	300	
360	550	300	
360	600	300	
360	650	300	
360	700	300	
360	750	300	
360	800	300	
360	850	300	
360	900	300	
360	950	300	
360	1000	300	

Ordering: For more information on how to order, please refer to the carcass order form.

Order Code	H	W	D
OH_Std			

ref m

OVERHEAD CORNER – 90 DEGREE

Carcase

(Manufactured to your specified size)

- Solid plant on back.
- Configured to accommodate left And/or right hand hinged door/s.

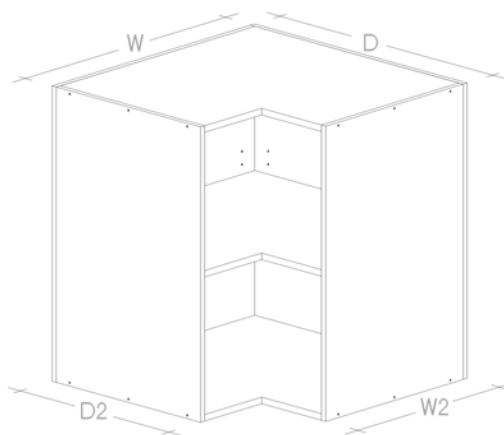
Shelves

- 1 adjustable center shelf set back 10mm.
- T-Mould edging to all shelves.

Hinge Block Holes

(Position variable if required)

- Std – 100mm to center of blocks.



Specs are standard only – Carcase sizes are parametric and can be changed in the height, width and depth

Pricing: For other sizes, price on application.

Height	Width	Depth	W2	D2
600	600	600	300	300
720	600	600	300	300
895	600	600	300	300

Ordering: For more information on how to order, please refer to the carcase order form.

Order Code	H	W	D	W2	D2
OH_Corner_90					

ref n

OVERHEAD CORNER – 45 DEGREE

Carcase

(Manufactured to your specified size)

- Solid plant on back.
- Configured to accommodate left and/or right hand hinged door/s.

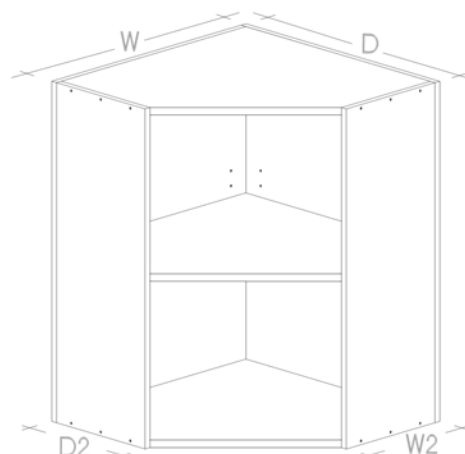
Shelves

- 1 adjustable shelf.
- T-Mould edging to all shelves.

Hinge Block Holes

(Position variable if required)

- Std – 100mm to center of blocks.



Specs are standard only – Carcase sizes are parametric and can be changed in the height, width and depth

Pricing: For other sizes, price on application.

Height	Width	Depth	W2	D2
600	600	600	300	300
720	600	600	300	300
895	600	600	300	300

Ordering: For more information on how to order, please refer to the carcase order form.

Order Code	H	W	D	W2	D2
OH_Corner_45					

ref o

PANTRY CABINET – STRAIGHT SHELVES

Carcase

(Manufactured to your specified size)

- Solid panel on back.
- Configured to accommodate left and/or right hand hinged door/s.
- Supplied in Upper and Lower sections.
- W2 = Height of Base section.

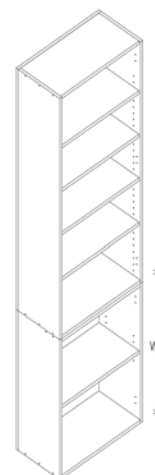
Shelves

- Upper – 3 adjustable shelves set back 10mm.
- Lower – 1 adjustable shelf set back 10mm.

Hinge Block Holes

(Position variable if required)

- Holes drilled standard.



Specs are standard only – Carcase sizes are parametric and can be changed in the height, width and depth

Pricing: Below pricing based on 1985mm high cabinet. For other sizes, price on application.

Height	Width	Depth	W2
1985	300	580	720
1985	350	580	720
1985	400	580	720
1985	450	580	720
1985	500	580	720
1985	550	580	720
1985	600	580	720
1985	650	580	720
1985	700	580	720
1985	750	580	720
1985	800	580	720
1985	850	580	720
1985	900	580	720
1985	950	580	720
1985	1000	580	720

Ordering: For more information on how to order, please refer to the carcass order form.

Order Code	H	W	D	W2
PC_Std_FullShlvs				

ref p

CORNER WALK IN PANTRY — SHAPED SHELVES

Carcase

(Manufactured to your specified size)

- Solid plant on back.
- Configured to accommodate left and/or right hand hinged door/s.

Shelves

- 1 fixed shelf set at 900mm high.
- 4 adjustable shelves.
- T-Mould edging to all shelves.

Hinge Block Holes

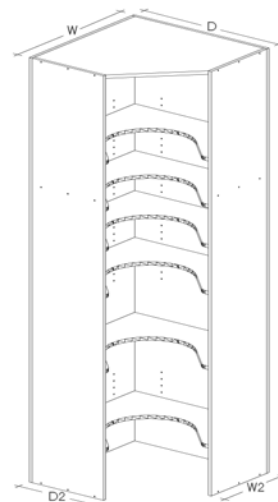
(Position variable if required)

- Holes drilled standard.

Corner Walk-In Pantry is the only carcase supplied that is NOT parametric.

Pricing: For other sizes, price on application.

Height	Width	Depth	W2	D2
1985	1000	1000	580	580
2130	1000	1000	580	580



Ordering: For more information on how to order, please refer to the carcase order form.

Order Code	H	W	D	W2	D2
PC_Corner_WI					

ref r

CORNER PANTRY 45 — L-SHAPED SHELVES

Carcase

(Manufactured to your specified size)

- Solid plant on back.
- Configured to accommodate left and/or right hand hinged door/s.

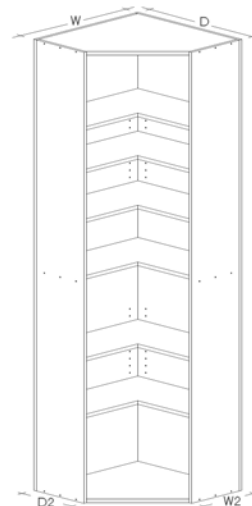
Shelves

- 1 fixed shelf.
- 4 adjustable shelves.
- T-Mould edging to all shelves.

Hinge Block Holes

(Position variable if required)

- Holes drilled standard.



Specs are standard only – Carcase sizes are parametric and can be changed in the height, width and depth

Pricing: For other sizes, price on application.

Height	Width	Depth	W2	D2
1985	1000	1000	580	580
2130	1000	1000	580	580

Ordering: For more information on how to order, please refer to the carcase order form.

Order Code	H	W	D	W2	D2
PC_Corner_45					

ref q

BROOM CABINET – 1 FIXED SHELF

Carcase

(Manufactured to your specified size)

- Solid plant on back.
- Configured to accommodate left and/or right hand hinged door/s.

Shelves

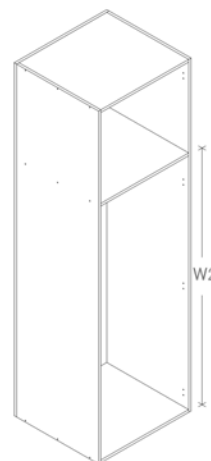
- W2 = height to top of fixed shelf.

Hinge Block Holes

(Position variable if required)

- Holes drilled standard.

Specs are standard only – Carcase sizes are parametric and can be changed in the height, width and depth



Pricing: Below pricing based on 1985mm high cabinet. For other sizes, price on application.

Height	Width	Depth	W2
1985	450	580	1535
1985	600	580	1535

Ordering: For more information on how to order, please refer to the carcase order form.

Order Code	H	W	D	W2
TC_Broom_1Fxd				

ref s

APPLIANCE CABINET – STANDARD

Carcase

(Manufactured to your specified size)

- Solid panel on back.
- Configured to accommodate left and/or right hand hinged door/s.

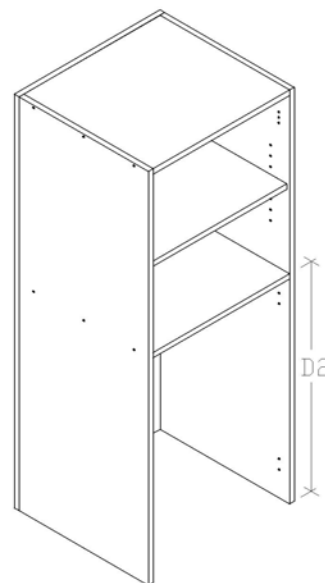
Shelves

- 1 adjustable shelf.
- Fixed shelf height to your specification.

Hinge Block Holes

(Position variable if required)

- Std – 100mm to center of top block.
- Std – 103mm to center of bottom block.



Specs are standard only – Carcase sizes are parametric and can be changed in the height, width and depth

Pricing: Below pricing based on 1230mm high cabinet. For other sizes, price on application.

Height	Width	Depth
1230	500	460
1230	600	460
1230	700	460
1230	800	460
1230	900	460
1230	1000	460

Ordering: For more information on how to order, please refer to the carcass order form.

Order Code	H	W	D	D2 (top of shelf)
AC_Std				

ref a

Albedor Industries carcass components are manufactured to custom sizes from the highest quality Australian Made E0 moisture resistant 16mm white particle board with matching PVC edging. Carcass components are pre-drilled for assembly holes, hinge plates, drawer runners, or adjustable shelving and come with 16mm solid backs.

Albedor Carcasses are supplied UNASSEMBLED.

Carcass componentry will be packed and wrapped on a skid base, ready for collection. Please discuss with Albedor the best method for you to collect your order (trailer, utility, van or truck).

Carcass Units Available:

- Base Cabinet Solid Top
- Base Cabinet Top Rail
- Base Cabinet Vertical Rail
- Drawer Cabinets
- Drawer Box
- Corner Cabinet 90 Degree
- Corner Cabinet Variable Angle
- Under Bench Oven Cabinet
- Base Cabinet Wall Oven
- Base Cabinet Return Right Hand
- Base Cabinet Return Left Hand
- Overhead Cabinet
- Overhead Corner
- Pantry Cabinet
- Corner Walk In Pantry
- Corner Pantry 45
- L Shaped Shelves
- Broom Cabinet
- Appliance Cabinet

General

- Manufactured in Victoria.

Albedor Industries Pty Ltd
7 Research Drive Croydon South Vic 3136
Ph (03) 9761 6330 Fax (03) 9761 6331
albedor@albedor.com.au

For more information please refer to our website
www.albedor.com.au

